



MONUMENTS OF THE NEW LAND

Episodes¹²

NEMESTUDIO AND THE CURATORIAL TEAM

Architecture¹² as² Measure⁷
Ölçü⁴ Olarak⁶ Mimarlık⁸

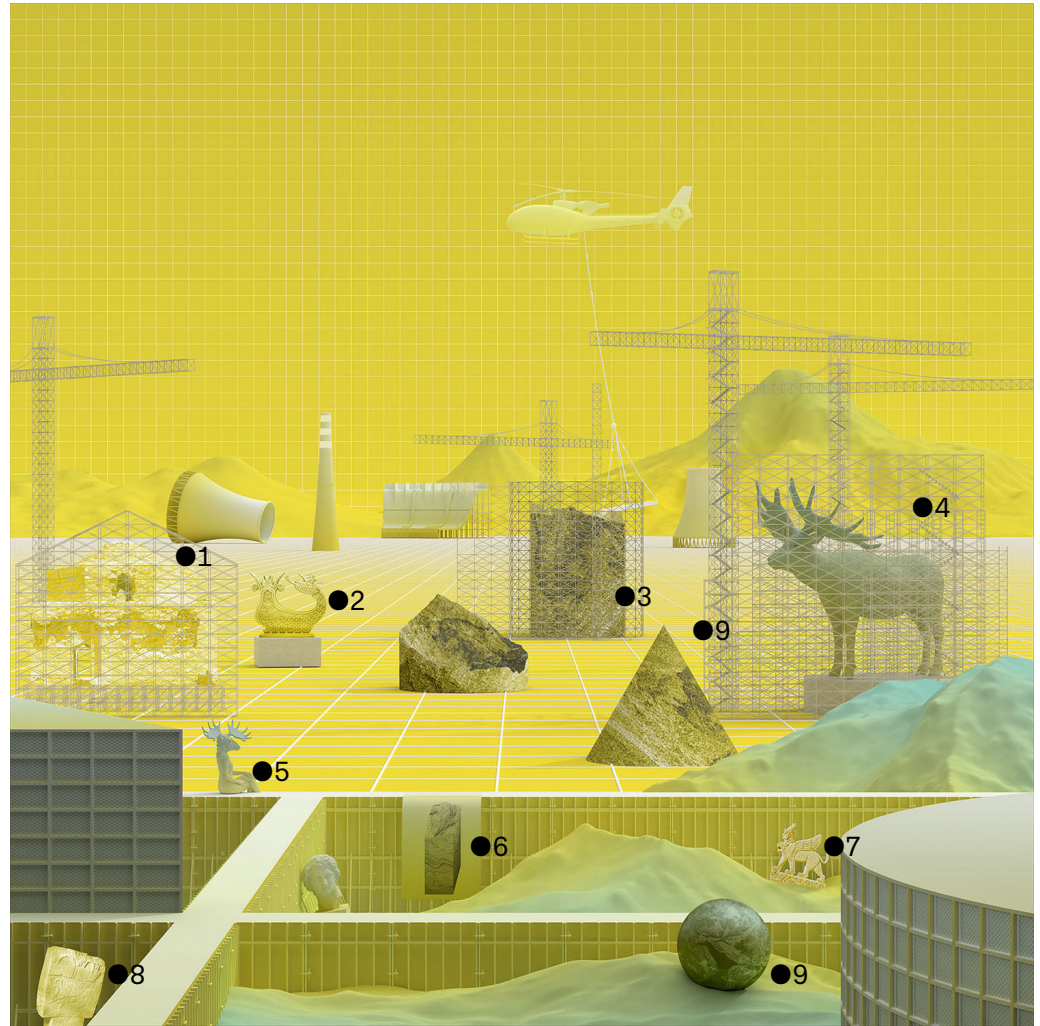


Image: Image: NEMESTUDIO, Four Dioramas, 2021. Diorama of Formwork. Courtesy of NEMESTUDIO.

- ¹ The Artuklu Hamam bath house under restoration in the New Land¹
- ² Şahmeran statue in the New Land²
- ³ Carbon Monuments, ancient rock formations built to sequester carbon through air-capture
- ⁴ Statue of the First Inhabitants construction nearing completion
- ⁵ New Species enjoying the monuments of the new landscape
- ⁶ Geologic section presenting soil as a geo-historical archive
- ⁷ Human and lion headed Neo-Hittite Sphinx laying on the niche³
- ⁸ T-shaped megalithic stone pillar from Göbekli Tepe depicting animal carvings

1 The 800-year-old Artuklu Hamam is one of the artifacts located in the southeastern town of Hasankeyf near Ilisu Dam. In recent years it was relocated due to the flood expected with the construction of the dam. One thousand six hundred tonnes Hamam was first cut from its foundation and placed on a platform with 256 wheels to travel approximately two miles to its new place called "Archeopark" where all the other flood-endangered artifacts are relocated.

2 Şahmeran is a mythical figure that is widely known in Anatolia. According to folk legends, the creature was in the form of a snake below the waist and a woman on the top. She was the queen of the Meran snakes living underground and owning a garden full of wonders and medicinal plants. Her human lover, who lived with her in the garden for an extended period, left her behind to return to his family and came back years later to save Sultan's life. She offered her head to Sultan to save him and body to the vizier to kill him. In the end, her lover replaced the vizier and became Lokman Hekim, a religious physician figure who found the potion for immortality.

3 A precursor to the Chimera figure, its counterpart in Greek Mythology, Neo-Hittite Double-Headed Sphinx is a mythical creature born in Anatolian lands. It has the body of a lion with lion and human heads, wings and a snake tail. In Neo-Hittite culture, the creature's figure was used to feel protected from evil, whereas in Greek culture, it was seen as a beast to be conquered.

●⁹ Globe map of ancient Earth demonstrating Turkey in 50,000,000 BCE⁴

4 Map of the Earth on a globe depicting 50,000,000 BCE from the Early Tertiary Period. During this period, asteroid impact had already killed 80 percent of species, including the dinosaurs. In the Tertiary Period, which spanned from 66 million to 2.6 million years ago, the Earth saw considerable ecological and climatic changes in Earth's systems as well as substantial evolutionary diversification of mammals, flowering plants, birds, deep-sea organisms, and many others. The landmass of contemporary Turkey does not exist at this time; instead, the Tethys Ocean, a tropical body of salt water, runs between the ancient land masses of Africa, Europe, and Asia.